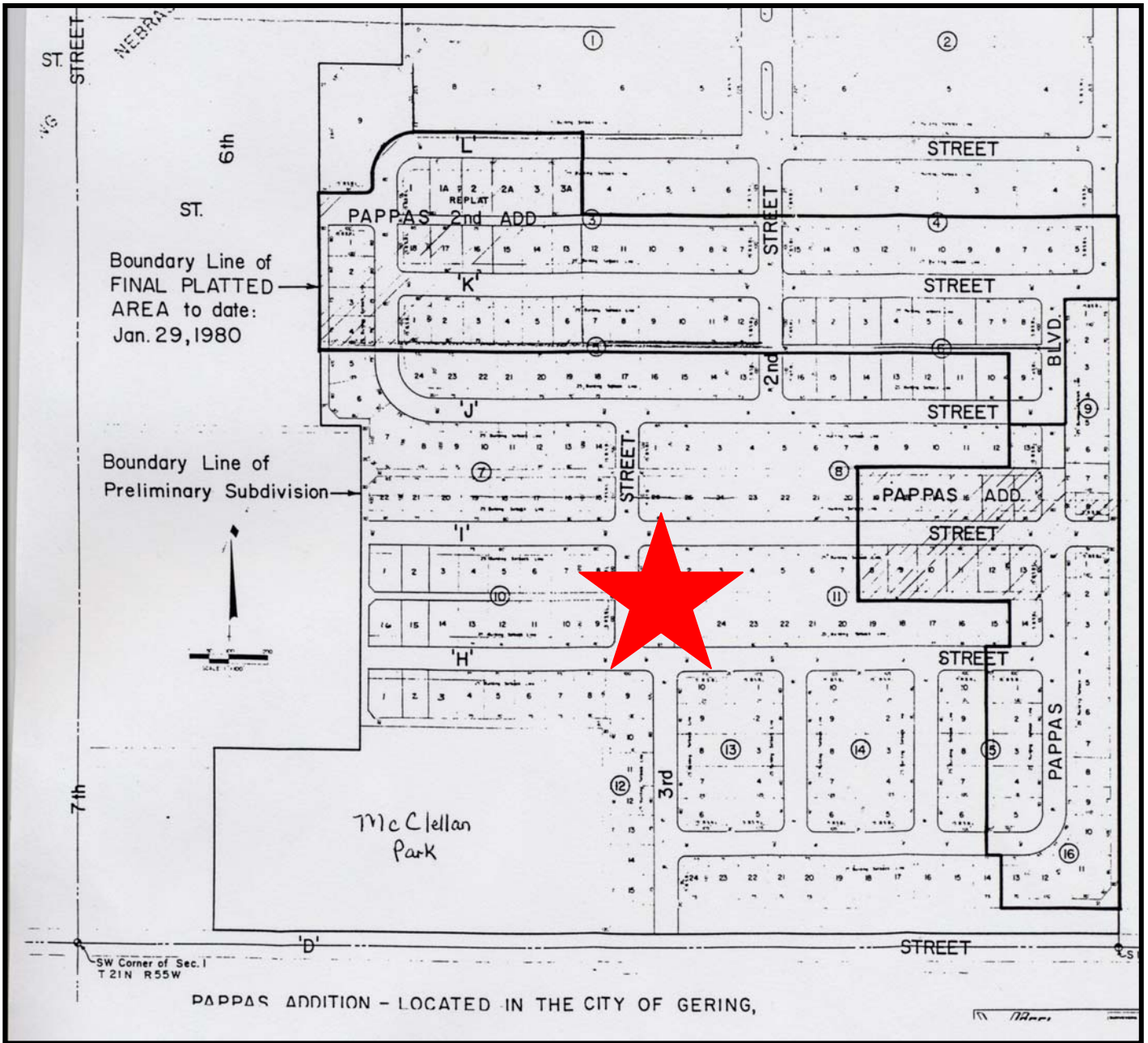


 PROPERTY



Boundary Line of
FINAL PLATTED
AREA to date:
Jan. 29, 1980

Boundary Line of
Preliminary Subdivision



McClellan
Park

SW Corner of Sec. 1
T 21N R 55W

PAPPAS ADDITION - LOCATED IN THE CITY OF GERING,

11/21/80