

Community Profile

Scottsbluff/Gering Nebraska

What's Inside

Agriculture
Business & Industry
Climate
Communications
Education
Health Care
Labor Market
Local Government
Major Employers
Map
Population & Income
Tourism
Transportation
Utilities



Scottsbluff/Gering United Chamber of Commerce
1517 Broadway Suite 104
Scottsbluff, NE 69361
308-632-2133
www.scottsbluffgering.net
chamber@scottsbluffgering.net



Twin Cities Development Association, Inc.
1517 Broadway Suite 128
Scottsbluff, NE 69361
308-632-2833
www.tcdne.org
twincitiesinfo@earthlink.net

Welcome to Our Community!



Karen S. Anderson
Executive Director,
Scottsbluff/
Gering United
Chamber of
Commerce

The Scottsbluff/Gering United Chamber of Commerce is pleased to provide this Community Profile as a valuable resource for your use. The Chamber is a voluntary partnership of business and professionals working together to build a healthy economy . . . truly the front door to our community and a voice for business. We hope you find the information in this profile useful. If you have any questions, please give the Chamber a call at 308-632-2133.



Rawnda Pierce
Executive Director,
Twin Cities
Development
Association,
Inc.

Twin Cities Development promotes economic and community development in Scotts Bluff County and other surrounding communities. TCD works cooperatively with other organizations to enhance the employment and economic base within the area. By helping to retain and expand existing businesses and to recruit new businesses and industry to the area, we hope to build a solid community with good job opportunities for our residents. If you are considering an expansion or relocation, let Twin Cities Development assist you.

For community information visit www.scottsbluffgering.net and www.tcdne.org



Fiona Libsack
Mayor of
Scottsbluff

Welcome to Scottsbluff!

Welcome to the city of Scottsbluff, a progressive community with much to offer. We are proud to be the economic hub of western Nebraska, ripe for business development and expansion.

We have great pride in the educational and recreational opportunities available in our city and the wonderful hometown atmosphere we enjoy. Our neighborhoods are safe, the air is clean and there are no traffic jams - life is good here. Welcome to Scottsbluff, Nebraska. It's truly a great place to live and work.



Starr Lehl
Mayor of
Gering

Welcome to Gering!

It is my pleasure to welcome you to Gering! I am confident that you will enjoy your stay and the rich history our community has to offer. Gering is a full-service city and we have been very progressive with the development of our civic center, outdoor amphitheater, RV park and beautiful 18-hole golf course. The many quality museums, spacious parks, walking and biking paths as well as any amenities you desire, you'll find in Gering "Western Nebraska's Great Escape"!



Glenn Hascall
Chair, Village
of Terrytown

Welcome to Terrytown!

There is much to see in Western Nebraska, The Village of Terrytown welcomes you to our community. You're always welcome here. It is our hope that this directory will aid you in discovering the beauty, natural resources and services readily available in historic Western Nebraska.



Mark Masterton
Chair, Scotts
Bluff County

Welcome to Scotts Bluff County!

Scotts Bluff County is the hub of the Panhandle. Scottsbluff and Gering are the population and business centers with shopping, entertainment, museums, restaurants, great schools, a wonderful hospital, a junior college that is second to none, and interesting activities all year long. Our PlatteValley communities and rural areas epitomize "The Good Life." If you live here, count your blessings. If you're visiting here on business or pleasure, enjoy our valley.

Business Profile

Agriculture

Agriculture, traditionally, is the backbone of Western Nebraska's economy and continues to be important in the Panhandle. Leading crops: alfalfa hay, barley, corn, dry edible beans, oats, sugar beets, and wheat. Livestock production: cattle and hogs.

In the past 10 years Scottsbluff ranked 1st in Nebraska in the production of dry edible beans and sugar beets. Scottsbluff/Gering businesses support the Panhandle's agricultural community.

Agribusinesses in the Twin Cities include: manufacturers of farm supplies, a sugar beet processing plant, truck companies transporting farm products, dry bean, wool and chicory processing plants and banks providing loans for farm operations.

Business Districts

Alco Strip Mall - Gering
Downtown Gering (10th Street)
Downtown Scottsbluff (Broadway)
East Overland - Scottsbluff
Highway 26 Corridor - Scottsbluff
Monument Mall Shopping Center - Scottsbluff
Scottsbluff Bypass/Avenue I - Scottsbluff
Wal-Mart Super Center - Scottsbluff
27th Street - Scottsbluff

Commercial Services

Machine Shops
Tool & Die Services
Electric Motor Repair Services
Banks
Credit Unions
Package Delivery Services
Business Training
Farm Equipment Sales/Service

Industrial Parks

Immigrant Trails Industrial Park: Southeast of Scottsbluff City limits
Skyport Industrial Park: Three Miles east of Scottsbluff near Airport
Industrial Parks 1 & 2: Southeast of Gering City limits on County Road

Local Economy

Scottsbluff/Gering/Terrytown has a diversified economic base. As in many Nebraska communities, agriculture continues to be the leading economic industry in the Valley. Other economic activities include finance, manufacturing, medical, retail, wholesale, education, and tourism, wholesalers distribute groceries, agricultural products, automotive, electronic, electrical, plumbing supplies, beverages, hardware, and farm equipment.

Lodging Tax - Scotts Bluff County

1994	\$69,639
1995	73,705
1996	74,629
1997	80,424
1998	83,892
1999	104,319
2000	93,030
2001	99,160
2002	102,942
2003	103,398

Retail Sales Tax for Scottsbluff/Gering

(Non-Motor Vehicle) Per Dept. of Revenue

	Scottsbluff	Gering	Seb. County
1990	\$184,388,921	\$36,875,275	\$237,761,073
1991	\$193,092,263	\$41,206,657	\$251,765,851
1992	\$198,146,289	\$41,675,060	\$256,814,702
1993	\$209,824,272	\$29,931,382	\$267,567,942
1994	\$217,199,854	\$40,337,431	\$277,369,136
1995	\$225,583,686	\$38,569,678	\$282,324,707
1996	\$239,789,546	\$40,868,524	\$297,788,014
1997	\$256,761,280	\$40,037,954	\$316,181,034
1998	\$249,669,616	\$42,609,821	\$309,847,420
1999	\$268,222,268	\$48,134,822	\$334,068,311
2000	\$274,258,608	\$51,928,779	\$343,230,163
2001	\$282,793,603	\$53,082,832	\$352,280,690
2002	\$285,053,024	\$52,479,267	\$354,840,140

Trade Area

Service Hub

Scottsbluff/Gering is a service hub for 11 Nebraska Counties and two Wyoming Counties: Banner, Box Butte, Cheyenne, Dawes, Garden, Kimball, Morrill, Scotts Bluff, Sheridan, and Sioux Counties, NE. Goshen and Niobrara Counties, WY.

Primary Trade Area

The primary retail trade area extends 36 miles southeast, 20 miles west, 23 miles northeast, and 45 miles north. The population for this area is approximately 50,000.

Secondary Trade Area

The secondary trade area extends west to Wheatland, WY: north to Harrison and Crawford, NE; east to Oshkosh, NE; and south to Kimball, NE. Approximately 125,000 customers are served in this secondary trade area.

Climate

Average Daily Temperature (in Fahrenheit degrees)

Month	Minimum	Mean	Maximum
January	11.8	24.8	37.9
April	31.5	47.1	61.4
July	58.7	74.6	89.7
October	33.7	50.2	62.5

Average Annual Precipitation:

15.01" rain/ 28.81" snow

Average Length Growing Season: 139 days

Altitude

Base of Scotts Bluff National Monument: 3,849'

Summit of Scotts Bluff National Monument: 4,649'

Communications

Internet Providers

Action Communication	(308) 632-7836 or (800) 558-7836
Charter Communications	(308) 635-3163
Mobius Communications	(308) 587-5500 or (308) 632-5514
Sprint	(877) 513-5074 or (877) 646-3282

Newspaper

Name	Published:	Circulation	Phone
Star-Herald	Daily except Mon.	16,000	(308) 632-9000 (800) 846-6102
Gering Courier	Weekly	2,000	(308) 436-2222
Business Farmer	Weekly	2,900	(308) 635-3110

The Omaha World Herald, USA Today, Denver Post, and Rocky Mountain News are also available.

Radio

There are 10 radio stations in the area:

KAAQ-FM	105.9	MHz
KCMI-FM	104	MHz
KMOR-FM	92.9	MHz
KNEB-AM	960	kHz
KNEB-FM	94.1	MHz
KOAQ-AM	690	kHz
KOLT-AM	1320	kHz
KOZY-FM	103.9	MHz
KPNY-FM	102	MHz
KTNE-FM	91.1	MHz

Television

There are 2 television stations with full-service news departments:

KDUH TV - ABC	Channel 4	Cable 9	(308) 632-3071
KSTF TV - CBS	Channel 10	Cable 6	(308) 632-6107

Charter Communications offers basic cable and digital cable. (308) 635-3163

Telephone - Local & Long Distance & Cellular

AllTel	(877) 869-3203
AT&T	(800) 222-0400
MCI	(800) 880-0800
Mobius Communications	(308) 587-5500 or (308) 632-5514
Sprint	(308) 635-8203 or (800) 788-3600

Education

2002-03 Public Schools - K-12:

Type/Degree	Enrollment
-------------	------------

Scottsbluff

Lincoln Heights Elementary	233
Longfellow Elementary	300
Roosevelt Elementary	284
Westmoor Elementary	343
Bluffs Middle School	
6th, 7th, 8th	669
Scottsbluff Sr. High School	
9th - 12th	915

Gering

Lincoln Elementary	296
Geil Elementary	328
Northfield Elementary	338
Gering Jr. High	
(7th - 9th)	465
Gering Sr. High	
(10th - 12th)	452

VALTS High School is an Alternative High School

Post High School:

Scottsbluff

Western Nebraska Community College

2 Year Transfer Degrees

Chadron State College at WNCC

4 Year Degrees Via Satellite

University of NE Medical Center College of Nursing

4 & 6 Year Degrees

University of NE Panhandle Learning Center

4 Year Degrees Via Satellite

Private Schools:

Scottsbluff

Community Christian School
St. Agnes Catholic School
Valley View 7th Day Adventist School
Platte Valley Bible College (2 & 4 Year Degrees)

Gering

Gering Christian Academy

Employment/Labor

Scotts Bluff County

Average Work Force - Per Workforce Development
(Revised 7-1-2003)

	2001	2002
Annual Average All Employment (includes farm)	18,002	18,102
Non-Farm Employment	17,110	16,967
Manufacturing	1,346	1,269
Durable Goods	372	356
Nondurable Goods	974	913
Non-Manufacturing		
Construction & Mining	838	811
Truck, Transportation, Utility & WH	4,216	4,180
Trade	3,214	3,237
Retail	2,413	2,387
Wholesale	801	849
Finance, Insurance & Real Estate	1,006	990
Services	14,927	14,887
Government	3,017	3,082
Federal	177	181
State	505	499
Local	2,334	2,402

2002 Scotts Bluff County Labor Data

Per Workforce Development

Total Labor Force	18,898
Employed	18,102
Unemployed	796
Unemployment Rate	4.2%

Hourly Wage Rates - Per Workforce Development - Quarter
Ending March 2003

Job Title	Entry Wage	Average Wage
Assembler	\$8.16	\$10.27
Customer Service	9.01	11.71
Data Entry	6.95	8.35
Electrician	19.38	20.92
Machining	7.77	9.84
Machinist	10.26	10.65
Painter/Spray	10.46	12.48
Programmer	18.35	20.79
Punch/Shears	8.52	9.88
Secretary	8.19	9.04
Sheet Metal	9.85	10.35
Typist/Clerical	6.44	9.61
Welder	7.23	10.85

% of Manufacturing Labor Force Unionized 17.2%

Work Stoppages in Past Two Years None

Health Care

Regional West Medical Center

Number of Beds 209

Number of Specialists

APRN	7	MD	97
ARRT	25	MT (ASCP)	20
CNM	1	OT	8
CNS	3	PAC	12
CRT	6	PT	12
DO	5	RN	267
FNP	2	RPH/PHAM	9
LMP/LPN	87	RRT	4

Medical Specialties

Air Link Air Ambulance	Orthopedic Surgery
Allergy	Otolaryngology
Anesthesiology	Pain Management
Apothecary Shoppe Retail Pharmacy	Pathology
Behavioral Health	Pediatrics
Birth & Infant Care	Physiatry
Blood Bank	Plastic Surgery
Breast Health	Podiatry
Cancer Treatment	Prostate Seed Implants
Cardiac Catheterization	Psychiatry
Cardiology	Psychology
Community Health	Pulmonology
Diagnostic Imaging	Radiation Oncology
Emergency Services	Radiology
Endoscopy	Rehabilitation
Family Medicine	Renal Dialysis
Genetic Clinic	Retirement Living
Intensive Care/Critical Care	Sentinal Node Biopsy
Internal Medicine	Sleep Studies
Lithotripsy	Sports Medicine
Neonatal Intensive Care	Stereotactic Breast Biopsy Surgery
Neurology	Trauma Services (Level II)
Obstetrics/Gynecology	Urology
Oncology	Vascular Services/Surgery
Ophthalmology	Women's Health
Oral Surgery & Maxillofacial	

Panhandle Community Services

Emergency Services/Crisis Intervention	Housing Services
Americorps	Immunization Program
Commodity Supplemental Food Program	Maternal Child Health Project
Community Health Center	Migrant Assistance Program
Crossroads Mentoring	Migrant Head Start
Dental Clinic	Migrant Health
Diabetic Support	Minority Health
Early Head Start	Panhandle Reproductive Health Care
Evergreen House	PCS Missing Link
Every Woman Matters	PCS Youth Shelter
Family & Community Services	Project Success
Family Development Program	Public Health Outreach & Nursing Education Program
Foster Grandparent Program	Reporting Center
Head Start	Transitional Living Program
Hepatitis B&C Counseling & Testing	Visitation Services
HIV/AIDS Testing & Counseling	Western Nebraska Child Development Center
	Women, Infants, & Children (WIC)

Local Government/Municipal Info

Gering has a Mayor, City Administrator, and City Council. **Scottsbluff** is governed by a Mayor, City Manager, and City Council. Both Cities and the County have zoning ordinances and building codes. Both Cities have a Comprehensive City Plan. Scottsbluff has a City Planner; Gering has an Engineer. Both Cities provide garbage service and both have a public library. 90-99% of streets are paved.

Fire Department	Gering	Scottsbluff
Paid	1	17
Volunteer	38	20
Insurance Class Inside City	6	3
Insurance Class Outside City	9	10

Police Department	Full-Time
Scottsbluff	32
Gering	15

Tax Structure:

Sales Tax	Scottsbluff	Gering	State
	1.50%	1.50%	5.50%

The State of Nebraska collects individual income tax, corporate income tax, sales and use tax, corporate occupation tax, and excise taxes for liquor, tobacco, motor and motor fuels. Nebraska has no state property or inventory tax. Local governments are financed by property taxes and city sales tax.

	Scottsbluff	Gering
2003 Actual Valuation of City	\$578,450,394	\$258,668,330
2003 Tax Rate (\$ per \$100 of actual value)		
City	.1990	.31625
County	.36829	.36829
School	1.13481	1.06444
Other	.16892	.16892
Total	1.87102	1.91790
Bond Indebtedness (as of 9/30/2003)		
General Obligation	\$1,630,000	\$232,666
Revenue	\$1,895,000	\$4,515,000
Other	\$730,000	\$140,000
Off-Street Parking	.14091	N/A
2003 Industrial Sites Tax Rates (\$ per \$100 of actual value)		
Outside City Limits	\$1.71497	\$1.65281

Building Permits Issued in 2003

	Gering	Scottsbluff
New Homes	44	23
New Commercial	4	6
Total All Permits	224	352

Percent of Home Ownership: 60%

Average Monthly Rental

3 Bedroom House	\$650.00
1 Bedroom Apartment	\$400.00

Average Cost of 3 Bedroom House Purchase: \$96,000

Community Contacts

City of Gering

(308) 436-5096 www.gering.org

City of Scottsbluff

(308) 632-4136 www.scottsbluff.org

Scott Bluff County

(308) 436-6600 www.scottsbluffcounty.org

Chamber of Commerce

(308) 632-2133 www.scottsbluffgering.net

Nebraska Business Development Center

(308) 635-7513 www.nbdc.unomaha.edu

Nebraska Department of Economic Development

(308) 632-0561/632-1370 www.neded.org

Nebraska Workforce Development

(308) 632-1420 www.dol.state.ne.us

Panhandle Area Development District

(308) 436-6584 www.nepadd.com

Panhandle Resource, Conservation, & Development

(308) 632-1311

Scotts Bluff County Tourism

(308) 632-2133 www.visitscottsbluff.com

Twin Cities Development Assoc., Inc.

(308) 632-2833 www.tcdne.org

Western Nebraska Small Business Resource Center

(308) 632-1230 www.panhandle.unl.edu

Major Employers

Employer	Product	# Employees	Phone # (308)
Regional West Medical Center	Hospital	1,300	635-3711
Aurora Loan Services	Mortgage Services	517	635-3500
Wal-Mart Super Center	Discount	450	632-2666
Western Sugar	Pure Beet Sugar	400	632-4155
Scottsbluff Public Schools	Education	370	635-6200
Panhandle Coop	Farm & Home	311	632-5301
Scotts Bluff County	Government	295	436-6600
Gering Public Schools	Education	285	436-3125
Panhandle Community Services	Human Services	250	635-3089
NTC	Freight	245	635-1214
City of Scottsbluff	Government	219	632-4136
Platte Valley Companies	Financial Services	214	632-7004
Kelley Bean Company	Dry Edible Beans	200	635-6438
Kinder Morgan	Utility	199	630-9682
Western NE Community College	Education	187	635-3606
Alliance Data Systems	Call Center	179	630-9443
Horizons West Medical Group	Health Care	165	630-2130
Magnolia	Modular Homes	160	436-3131
Beverly Health Care	Nursing Home	149	635-2019
Kurt Manufacturing (Lyman)	Machined Components	146	787-1211
Region I Office of Human Dev.	Human Services	125	635-3444
Ideal Linen	Laundry & Supplies	110	632-7197
Northfield Villa	Retirement Center	105	436-3101
Heritage Health Care Center	Nursing Home	98	436-5007
Target	Discount	95	632-6223
Western NE Veteran's Home	Retirement Center	90	632-0300
K-Mart	Discount	85	632-3232
City of Gering	Government	83	436-5096
Albertson's	Grocery	80	632-2002
Star Herald	Newspaper Publishing	80	632-9000
UNL Panhandle Complex	Education/Research	80	632-1230
Valley Bank & Trust Company	Financial Services	80	436-2300
Herbergers	Retail	78	635-7600
Health & Human Services	Human Services	69	436-6500
TEAM Chevrolet	Car Dealer	67	632-2173
Reganis Auto Center	Car Dealer	58	632-8200
Safeway	Grocery	54	635-1232
The Residency	Retirement Center	53	632-4342
First State Bank	Financial Services	50	632-4158
Panhandle Concrete Products	Blocks, Pipe	50	632-2161

Population and Income

Population (per NDED & US Census)

2000

Gering	7,751
Scottsbluff	14,732
Scotts Bluff County	36,951

Projections	2010	2015	2020
	39,858	41,842	43,966

Population Age Breakdown:

	18-24	25-44	45-54
Male	1,530	4,541	2,438
Female	1,534	4,903	2,672
Total	3,064	9,444	5,110

Income

Scotts Bluff County

2003 Median Household Income - 4 Person \$44,900
Average Weekly Wage (Quarter Ending 12/02) -\$495.52

Tourism

Carved out by the North Platte River, the Valley is home to rich farm ground and good, honest people with a warm, western hospitality that will make you feel right at home. Our attractions will amaze you, our variety of cultural foods will satisfy you, and our lodging properties will delight you.

Hunt, fish, hike, camp, golf, bike, swim, bowl: these are just some of the activities offered in the Valley. Our largest attractions, Scotts Bluff National Monument and Lake Minatare, annually attract close to 300,000 visitors to our area. The Valley's largest draw, however, is an attraction we didn't have anything to do with – our ancestors made it! The Oregon, California, and Mormon Trails attract history buffs, motor coaches, school groups, and families from all over the world.

When you visit the Valley and the communities of Scottsbluff, Gering, & Terrytown you'll want to explore our museums, historical sites, and recreational activities. Come visit! Stay awhile, and enjoy the Valley.

Sites/Attractions/Museums

Agate Fossil Beds National Monument
Cedar Canyon/Buffalo Creek Wildlife Mgmt Area
Chimney Rock State Historic Site
Farm and Ranch Museum
Lake Minatare State Recreation Area
Mexican American Historical Museum
North Platte Valley Museum
Oregon Trail Museum
Rebecca Winters Grave Site
Riverside Zoo
Robidoux Trading Post
Scotts Bluff National Monument
Wildcat Hills Nature Center
Wildlife World

Other Recreation Opportunities

Antiques Shops
Boating
Bowling Alleys
County Fairgrounds
Golf Courses
Horseshoe Courts
Hunting/Fishing
Movie Theatres
Public Parks
Racing Speedway
Recreation Centers
Roller Skating Arena
Shooting Range (Indoor)
Skateboard Parks
Soccer Fields
Softball & Baseball Fields
Swimming Pools
Tennis Courts
Various Organized Clubs
Walking/Biking Paths
Water Slides
YMCA

Convention Facilities

Gering Civic Center
Hampton Inn & Suites
Scotts Bluff County Events Center
Scottsbluff Day's Inn
University of Nebraska Complex
Western Nebraska Community College

Performing & Visual Arts

Community Concert Association
Five Rocks Amphitheater
Foothills Theatre
Midwest Theatre
Platte Valley Musical Arts
West Nebraska Arts Center
WNCC's Theatre West

Lodging Accommodations

	Number	Capacity
Motels	17	859 units
Campgrounds/ RV Parks	6	383 units

Transportation

State and US Highways

US Highway 26 is the major east/west route through Scotts Bluff County, intersecting on the western edge of Scottsbluff with Nebr. State Highway 71/29, the major north/south route. Nebr. State Highways 71 and 92 (east/west) pass through Gering.

Interstate 80 is 40 miles south of Scottsbluff/Gering. Highway 71, which is 4 lanes to Kimball, NE and Interstate 80, is part of the "Heartland Expressway" from Denver, CO to Rapid City, SD. Interstate 25 is 80 miles west.

Bus Lines

Denver Coach of Scottsbluff provides daily passenger service by reservation from Panhandle communities to Denver, CO, as well as scheduled routes to Eastern Nebraska.

Air Service

Western Nebraska Regional Airport is located 3.5 miles north of Scottsbluff. It has three lighted, hard surface runways with lengths of 8,280', 8,087', and 8,001' and is capable of handling lanes up to 265,000 pounds. Daily connecting flights to Denver, CO via Great Lakes Aviation, Ltd. dba United Express.

Westward Airways offers two flights daily between Scottsbluff, North Platte, Lincoln, and Omaha.

Valley Airways offers private charter service and flight instruction.

Truck Service

Seven interstate carriers and five intrastate carriers, including UPS, Federal Express, & Nebraska Transport.

Rail Freight Service

The communities are served by freight lines of Burlington Northern Santa Fe and Union Pacific Railroads. Approximately 5 freight trains and 83 coal trains run daily through Scottsbluff and Gering.

Mileage From Scottsbluff/Gering To:

Casper, WY	175
Cheyenne, WY	110
Chicago, IL	912
Dallas, TX	889
Denver, CO	200
Ft. Collins, CO	155
Kansas City, MO	605
Los Angeles, CA	1,237
Minneapolis, MN	643
New York, NY	1,704
Omaha, NE	453
Rapid City, SD	204
St. Louis, MO	862

Time In Transit:

City	Days by Rail	Days by Motor Carrier
Chicago, IL	4	2
Dallas, TX	6	3
Denver, CO	2	1
Kansas City, MO	2	2
Los Angeles, CA	5	3-4
Minneapolis, MN	6	2
New York, NY	7	4
St. Louis, MO	4	2-3
Omaha, NE	2	1

Utilities

For rate information, contact the specific utility listed or visit www.tcdne.org/utilities.htm

Electricity

	Gering	Scottsbluff
Supplier	City of Gering	Nebraska Public Power Dist.
Phone	(308) 436-6800	(877) 275-6773
KW Capacity	25,000	82,000
KW Peak Demand	15,000	44,000

Water

	Gering	Scottsbluff
Supplier	City of Gering	City of Scottsbluff
Phone	(308) 436-6800	(308) 630-6220
Source	Water Wells	Wells
# Wells	12	12
Plant Capacity	10,000 gal/min	14,100 gal/min
Average Consumption	3,100,000	4,083,590
Peak Consumption	9,500,000	11,200,000
Hardness (ppm)	300	390
Temperature Range	50-60 degrees	50-60 degrees

Sanitation

	Gering	Scottsbluff
Supplier	City of Gering	City of Scottsbluff
Phone	(308) 436-6800	(308) 630-6220
Type of Sewage		
Treatment:	Aerated Lagoons and Stabilization Ponds	Extended Aerated Activated Sludge
Capacity	1,900,000 gal/day	4,000,000 gal/day
Present Load	1,000,000 gal/day	3,400,000 gal/day
Sewer Use Charge	Yes	Yes

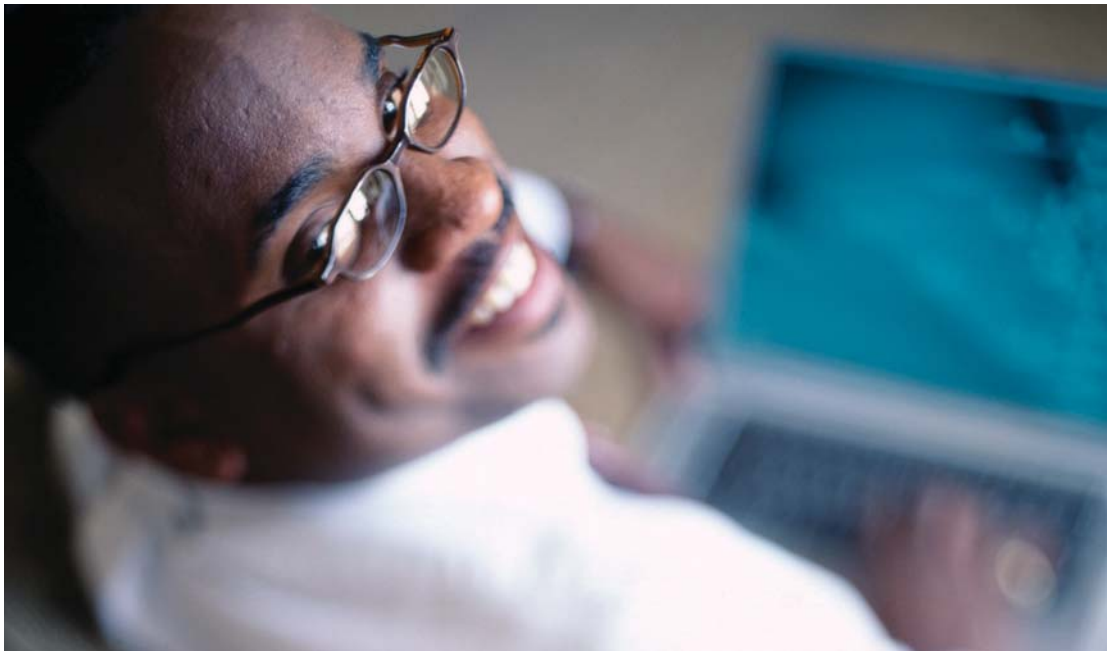
Recycling Center

Scottsbluff Recycling Center (308) 630-0985

Natural Gas

Kinder Morgan: Serving: Gering, Scottsbluff, Terrytown, Bayard, Mitchell, Morrill, Minatare, Lyman & Rural Areas
(308) 635-2006 or (800) 563-0012

Stay connected, Scottsbluff / Gering.



At Sprint, we work hard to bring you products and services that are among the most innovative and reliable so that you can stay connected to what matters most.

Sprint is pleased to deliver reliable, cutting-edge communications technologies that help local businesses succeed.



One Sprint. Many Solutions.SM

www.sprint.com/localbusiness